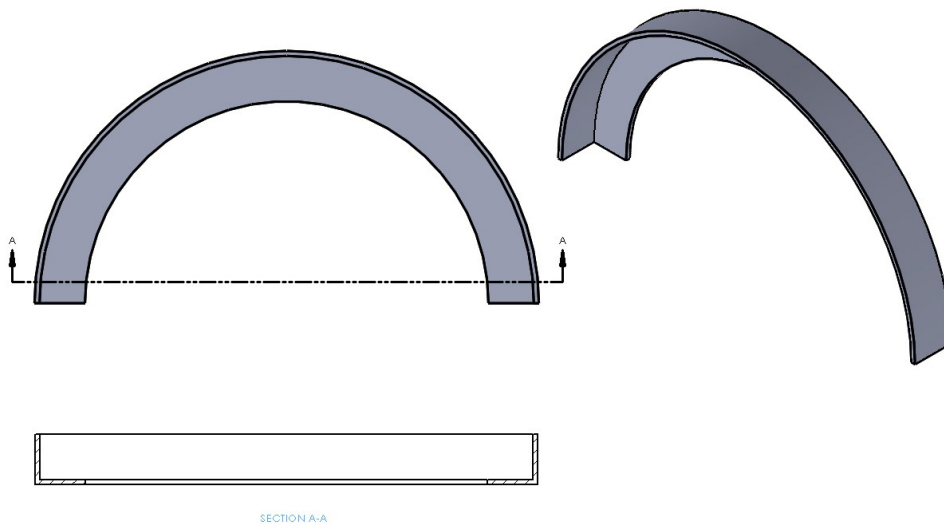


### Angle - Equal Toe Out

Maximum Leg Size 100x100

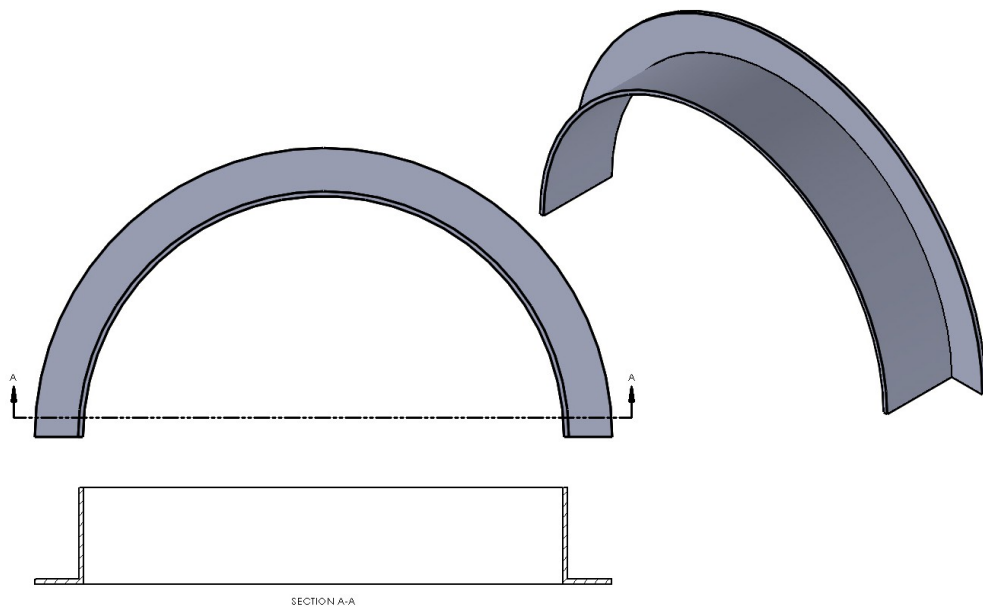
Minimum Radius Depends on size and thickness. Approximately 2 m at max size



### Angle - Equal Toe In

Maximum Leg Size 100x100

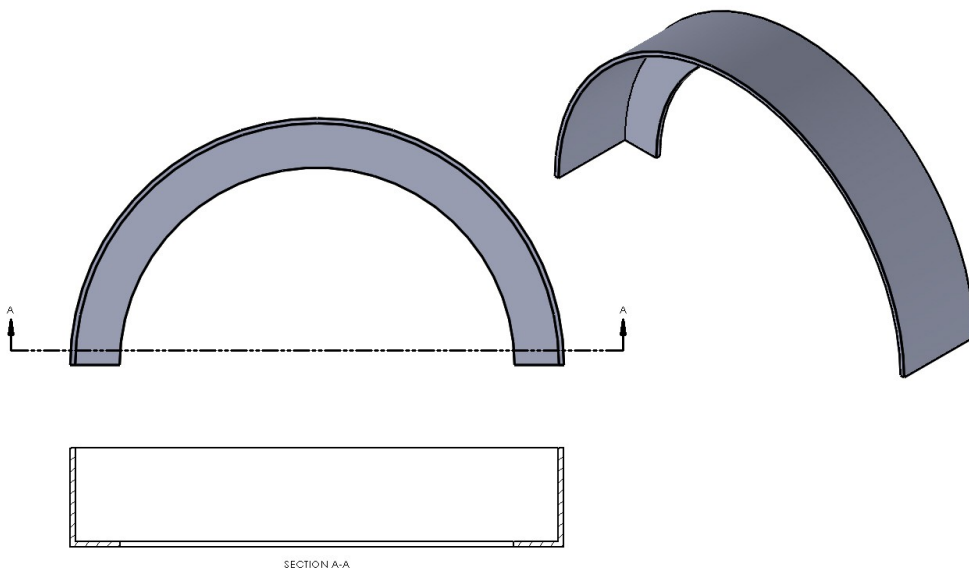
Minimum Radius Depends on size and thickness. Approximately 2 m at max size



### Angle - Unequal Toe Out

Maximum Leg Size 100x150

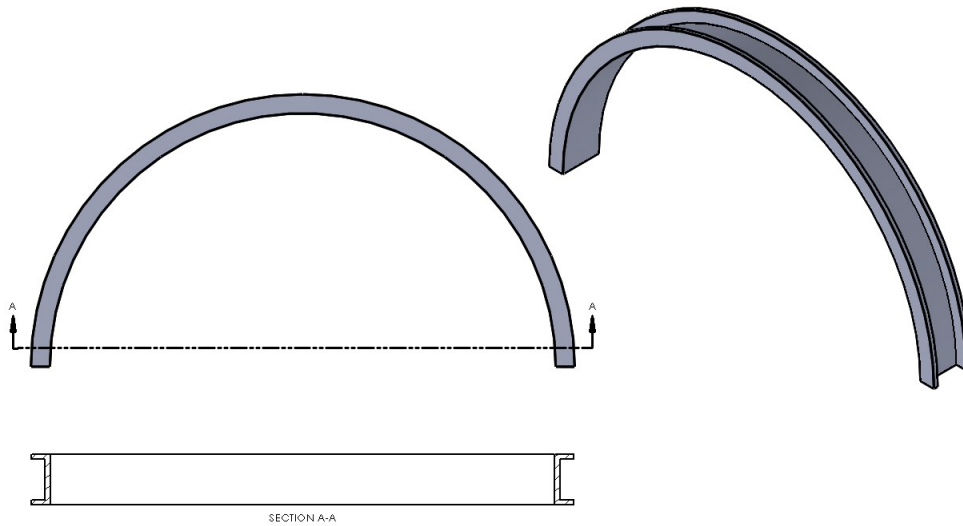
Minimum Radius Depends on size and thickness. Approximately 2 m at max size



### Angle - Unequal Toe In

Maximum Leg Size 100x150

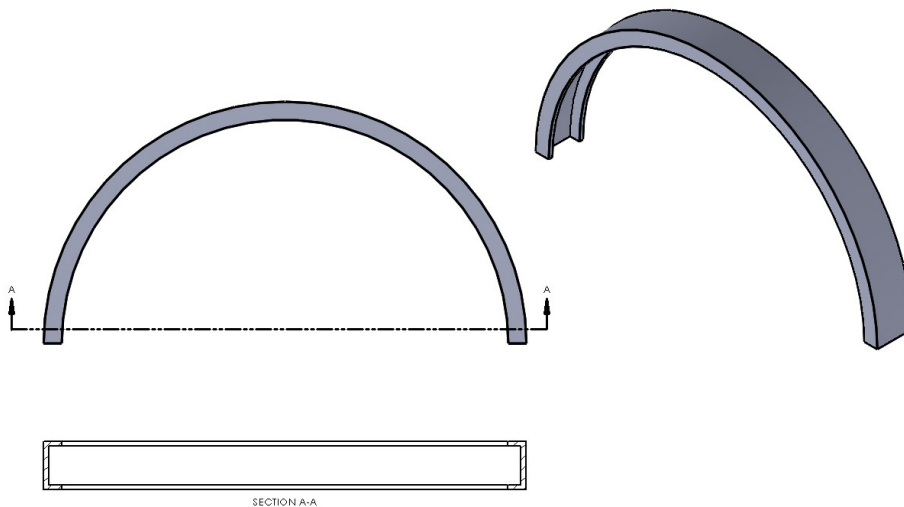
Minimum Radius Depends on size and thickness. Approximately 2 m at max size



## Channel Toe Out

Maximum Size 180 PFC

Minimum Radius Depends on size and thickness. Approximately 2 m at max size

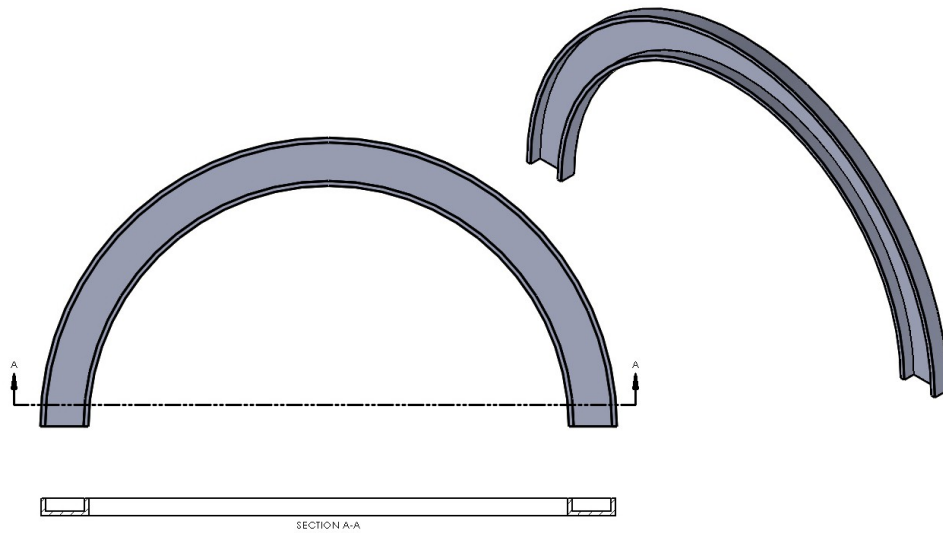


## Channel Toe In

Maximum Size 180 PFC

Minimum Radius Depends on size and thickness. Approximately

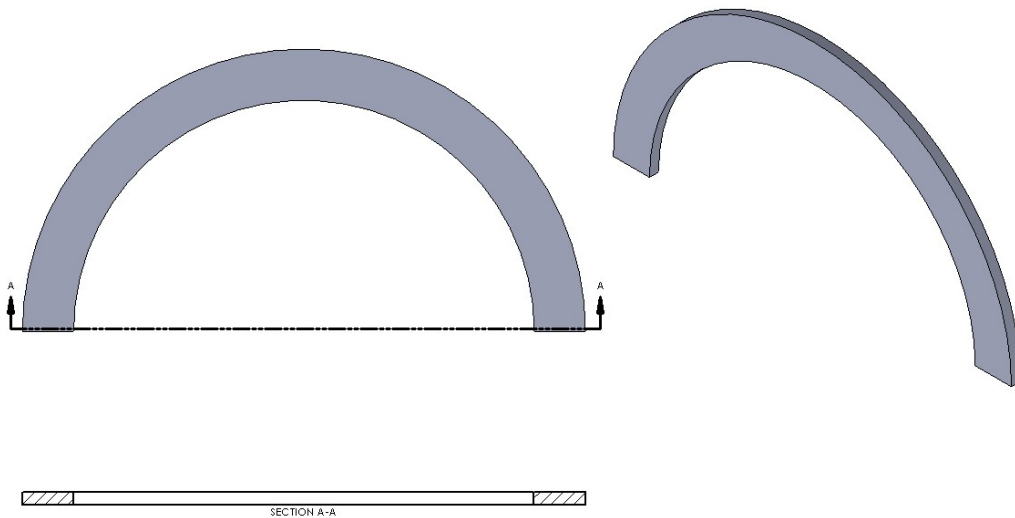
2 m at max size



## Channel On Edge

Maximum Size 100x50

Minimum Radius Depends on size and thickness. Approximately 2 m at max size

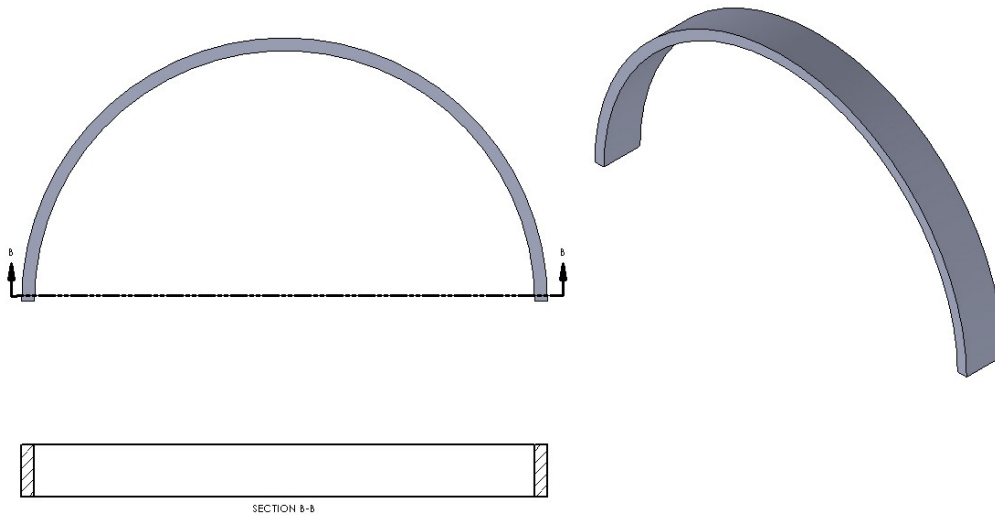


## Flat On Edge

Maximum Leg Size 100x20

Minimum Radius Depends on size and thickness. Approximately

2 m at max size

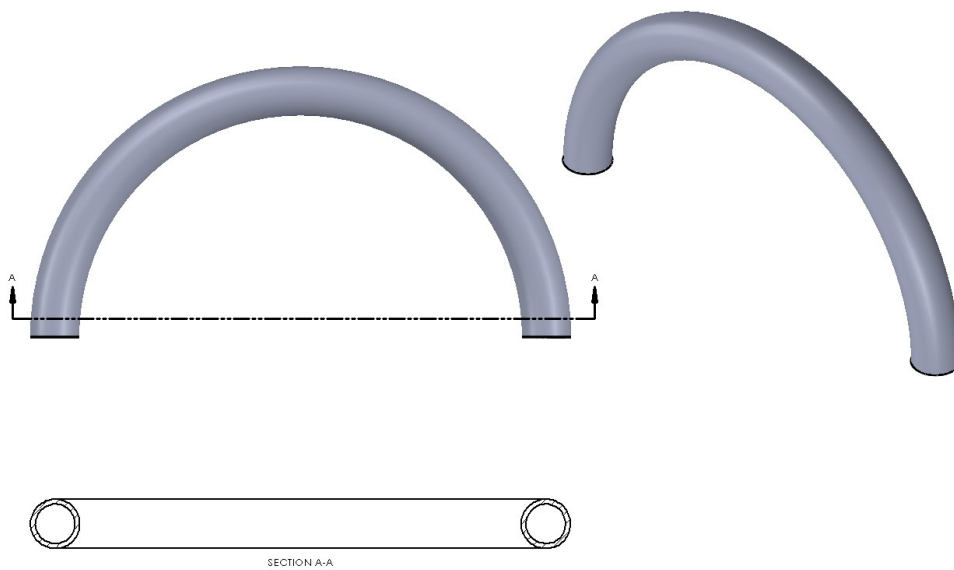


## Flat On Flat

Maximum Leg Size 300 x 30

Minimum Radius Depends on size and thickness. Approximately

600 mm at max size

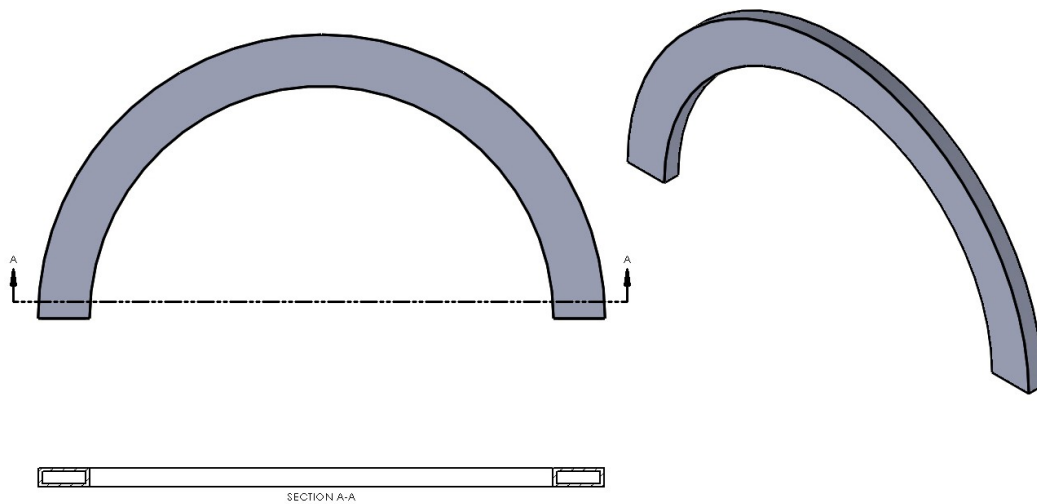


## Pipe and Round Tube

Maximum Diameter 100 NB Sch 80

Minimum Radius Depends on size and thickness. Approximately

700 mm at max size

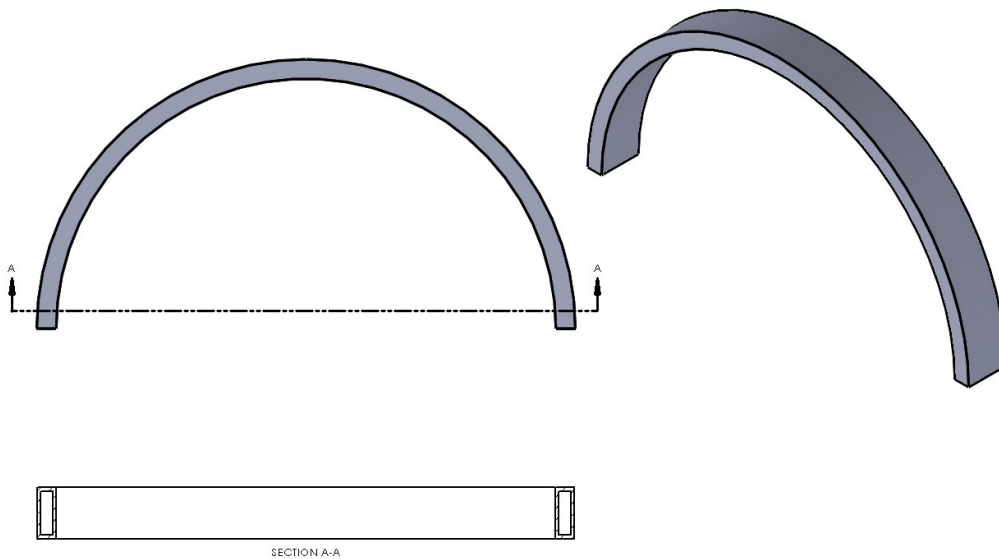


## RHS On Edge & SHS

Maximum Size 100 x 100 x8

Minimum Radius Depends on size and thickness. Approximately

800 mm at max size



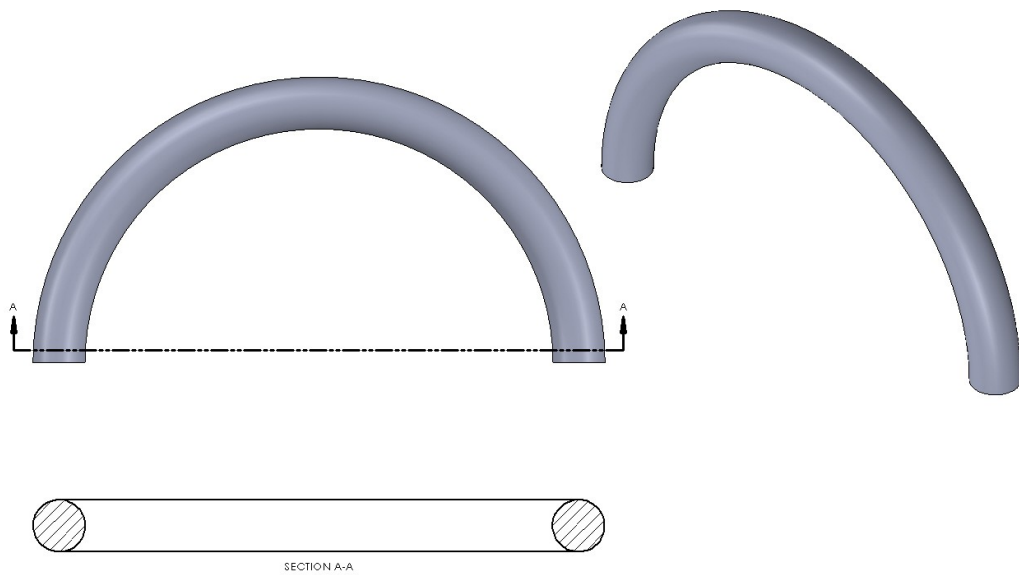
## RHS On Flat

Maximum Size 125 x 100 x8

Minimum Radius Depends on size and thickness. Thinner sections distort on top and bottom.

Approximately

2000 mm at max size

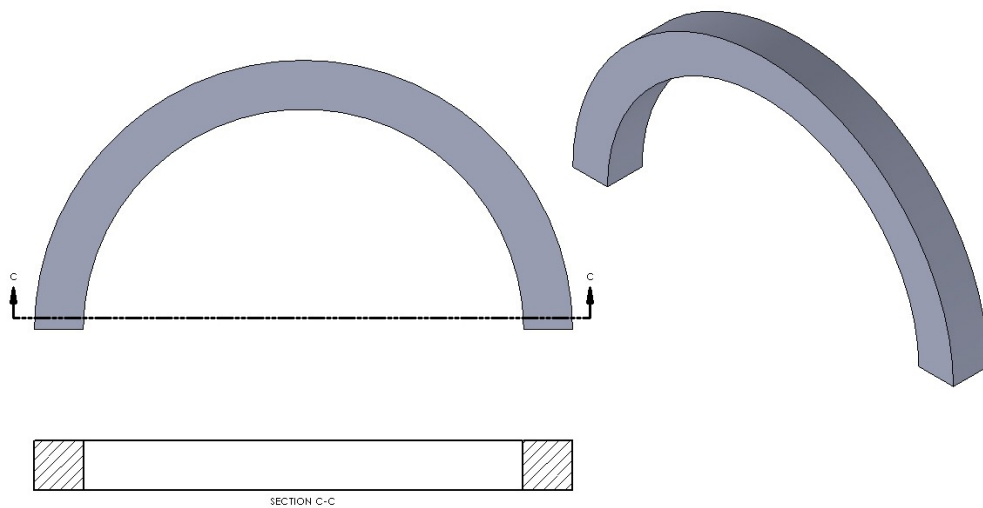


## Round Solid

Maximum Diameter 75 mm

Minimum Radius Depends on size and thickness. Approximately

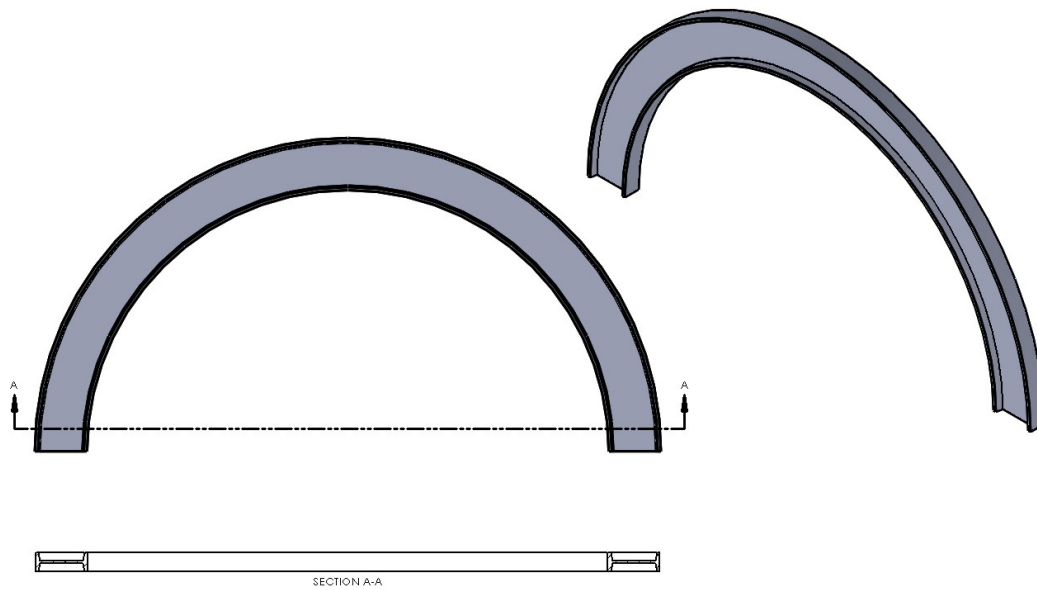
500 mm at max size



## Square Solid

Maximum Size 60 mm

Minimum Radius Depends on size and thickness. Approximately 500 mm at max size

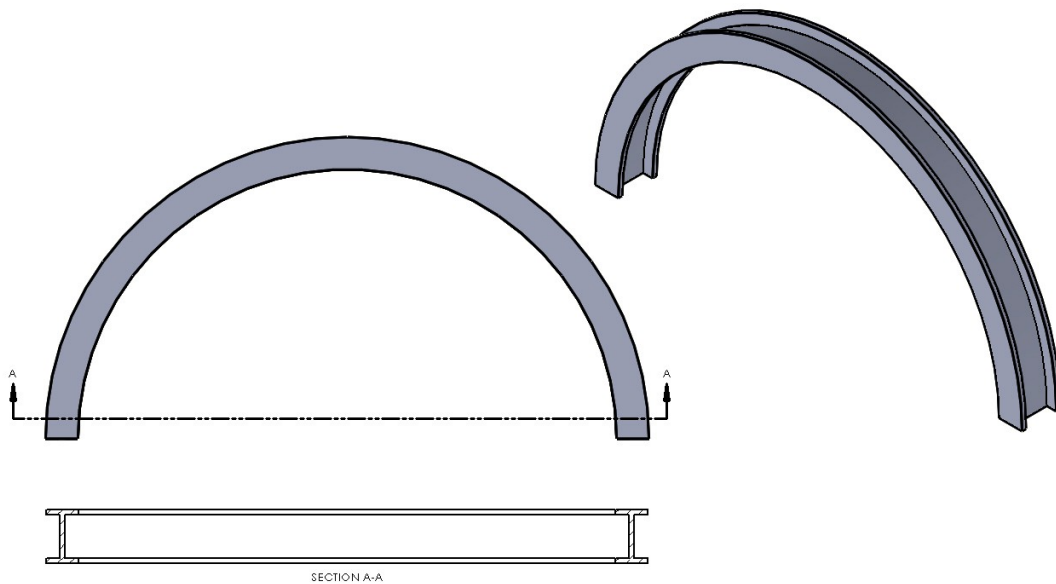


## TFB on Edge

Maximum Size 125 mm

Minimum Radius Depends on size and thickness. Approximately

2000 mm at max size



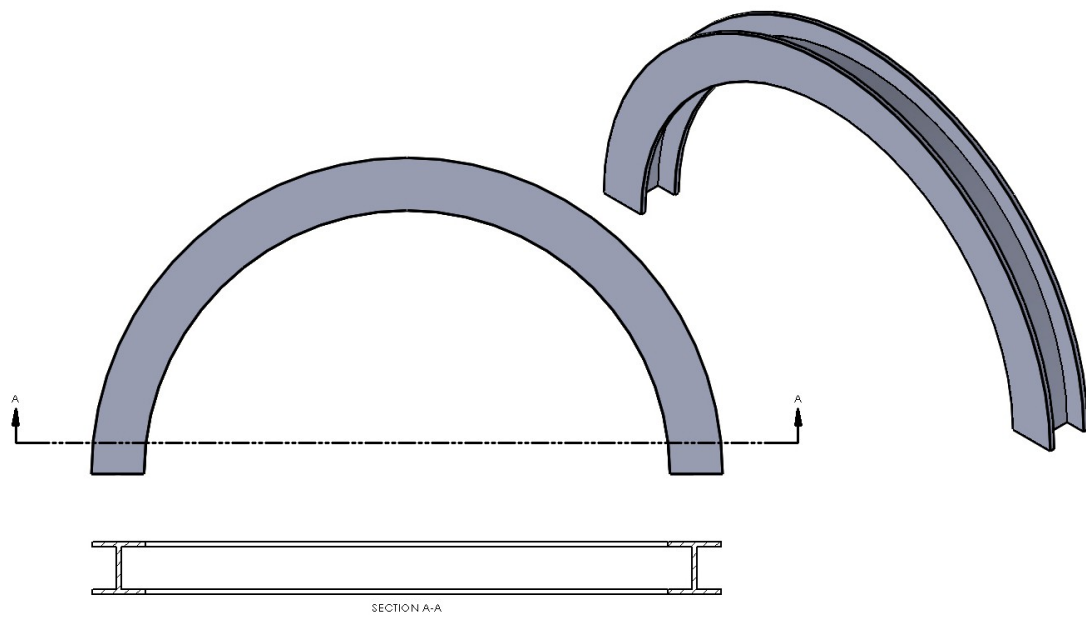
## UB Easy Way

Maximum Size 180 UB

Minimum Radius Depends on size and thickness. Approximately

2000 mm at max size





## UC Easy Way

Maximum Size 100 UC

Minimum Radius Depends on size and thickness. Approximately

2000 mm at max size